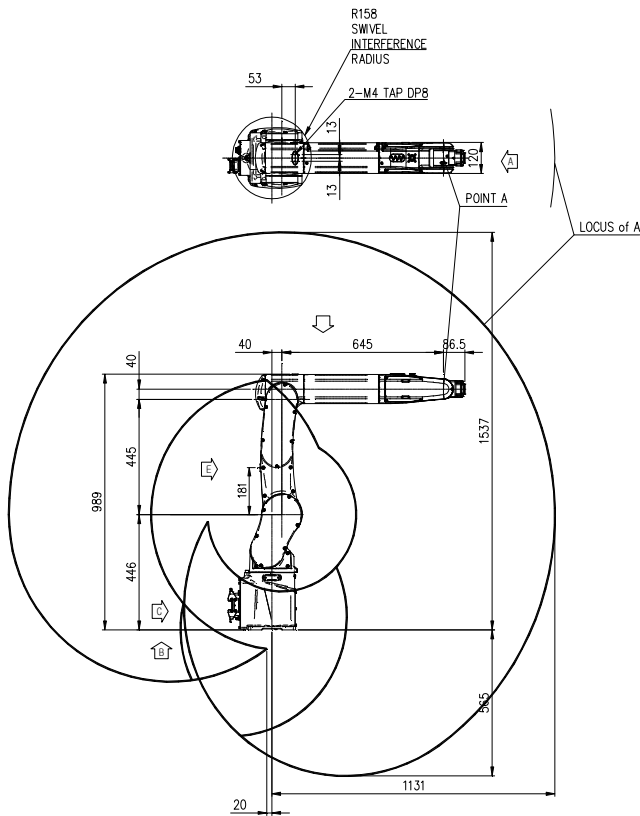
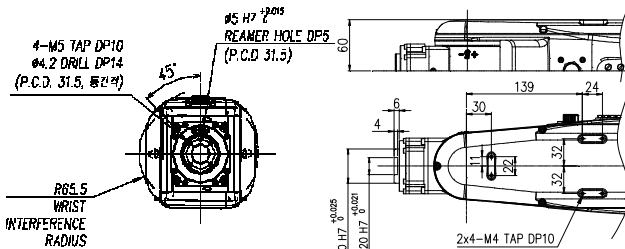


# HH4L

Installation method		Application	
Floor	●	Spot welding	
Ceiling	●	Arc welding	
Wall surface	●	Handling	●
		Assembly	●
		Sealing	●
		Painting	●

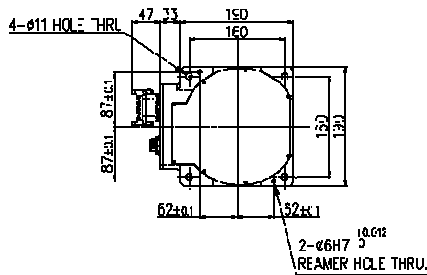


**View A: Detailed drawing of the wrist attachment**



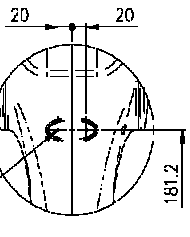
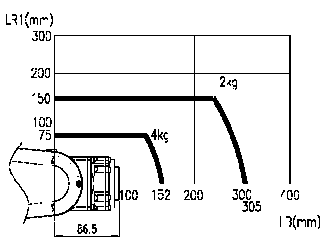
**View B: Dimensional drawing for the floor installation of the body**

**View G: Application part mounting**



**Wrist-axis torque line diagram**

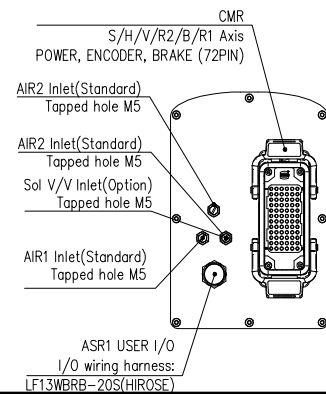
**View E: Application part mounting**



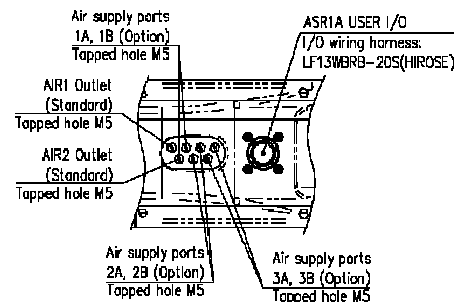
Item		Specification		
Robot model		HH4L		
Payload		4 Kg		
Structure		Articulated		
Degree of freedom		6 axes		
Drive system		AC SERVO MOTOR		
Max. working envelope	Arm	A	S Swivel	±2.967 rad (±170°)
		H	Horizontal	55°
		V	Vertical	+3.71 ~ -1.22 rad (+213° ~ -70°)
	Wrist	R2	Rotation 2	±3.316 rad (±190°)
		B	Bending	±2.356 rad (±135°)
Max. working speed	Arm	R1	Rotation 1	±6.283 rad (±360°)
		A	S Swivel	5.235 rad / s (300° / s)
		H	Horizontal	4.014 rad / s (230° / s)
	V	Vertical	6.283 rad / s (360° / s)	
	Wrist	R2	Rotation 2	9.599 rad / s (550° / s)
B		Bending	9.599 rad / s (550° / s)	
Wrist torque	R1	Rotation 1	17.453 rad / s (1000° / s)	
	R2	Rotation 2	6 N.m (0.61 Kgf.m)	
	B	Bending	6 N.m (0.61 Kgf.m)	
	R1	Rotation 1	2.9 N.m (0.30 Kgf.m)	
Accuracy of position repeatability		±0.03 mm		
Ambient Temperature		0 ~ 45 °C (273 ~ 318 K)		
Robot's Weight		43 Kg		
Working envelope section area		3.45 m²		

**\*) When the optional limit switch is attached, the action range of the main axis will be limited (see the manual)**

**View C: Application cable connection part**



**View D: Application cable connection part**



**\*\* For product improvement, some of the ratings, specifications, dimensions, etc. are subject to changes without notice**