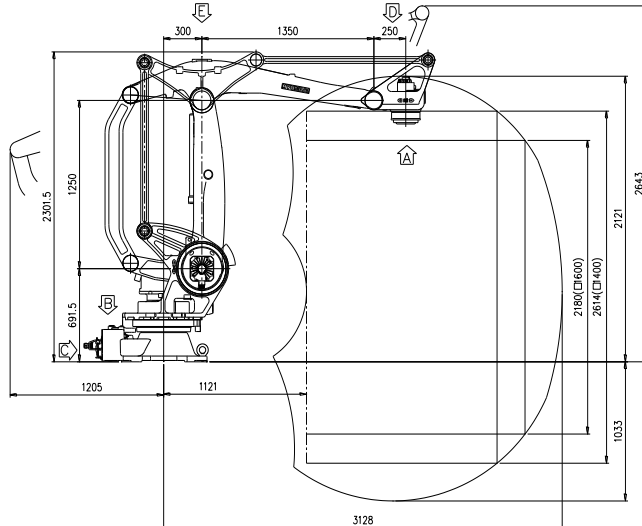
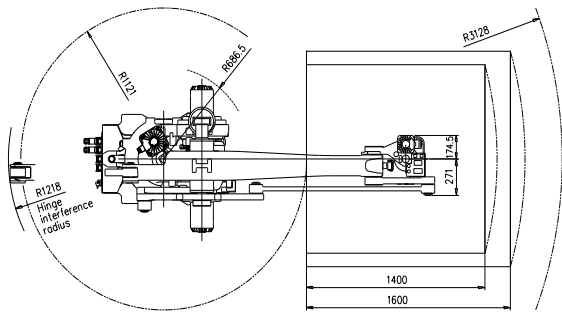


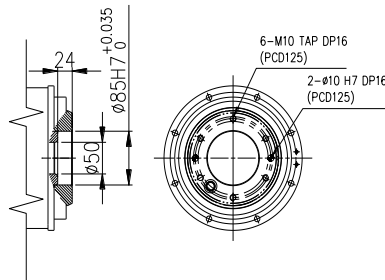
# HP160

## Payload 160Kgf

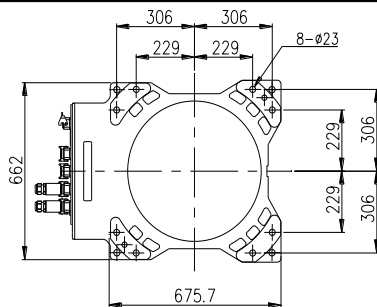
Installation method	Application
Floor	Spot welding
Ceiling	Arc welding
Wall surface	Palletizing
	Handling
	Sealing
	Painting



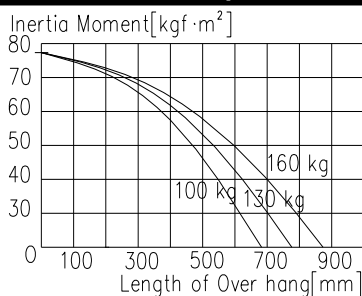
View A: Detailed drawing of the wrist



View B: Dimensional drawing for the floor installation of the body



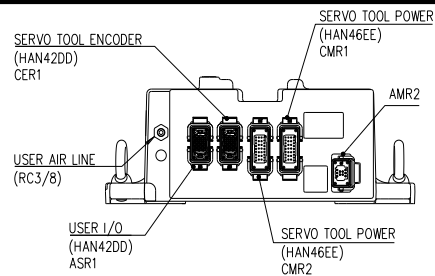
Wrist-axis torque line diagram



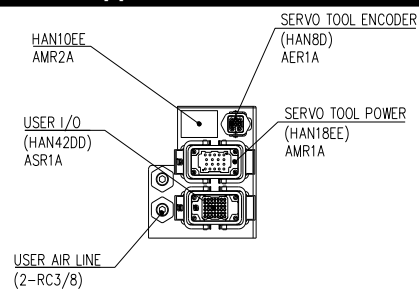
Item	Specification	Remarks	
Robot model	HP160		
Payload	160 kg	Including the hand weight	
Structure	Articulated		
Degree of freedom	4 axes		
Capacity	Box	1300 CPH	
	Bag	1558 CPH	
* Note: This capacity varies on loading condition/system configuration method.		When moving at a 100% load ratio, including the hand	
Max. working envelope	Swivel (S)	±180°	
	Loading zone (mm <sup>2</sup> )	□1400	2614 mm
		□1600	2180 mm
Wrist (W)	±360°		
Wrist permissible inertia	78 kg·m <sup>2</sup>		
Accuracy of position repeatability	±0.5 mm		
Ambient Temperature	0 ~ 45 °C (273 ~ 318 K)		
Robot's Weight	1250 Kg		
Working envelope section area	5.76 m <sup>2</sup>		

[Note] The palletizing capacity is based on the result of the tests carried out at 100% load ratio, each with the standard pattern of our company (vertical: 400 mm; horizontal: 2,000 mm).

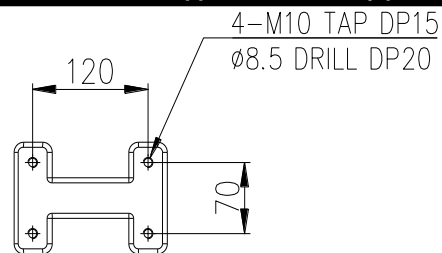
View C: Application cable connection part



View D: Application cable connection part



View E: Details of the application ancillary part attachment



\*\* For product improvement, some of the ratings, specifications, dimensions, etc. are subject to changes without notice.