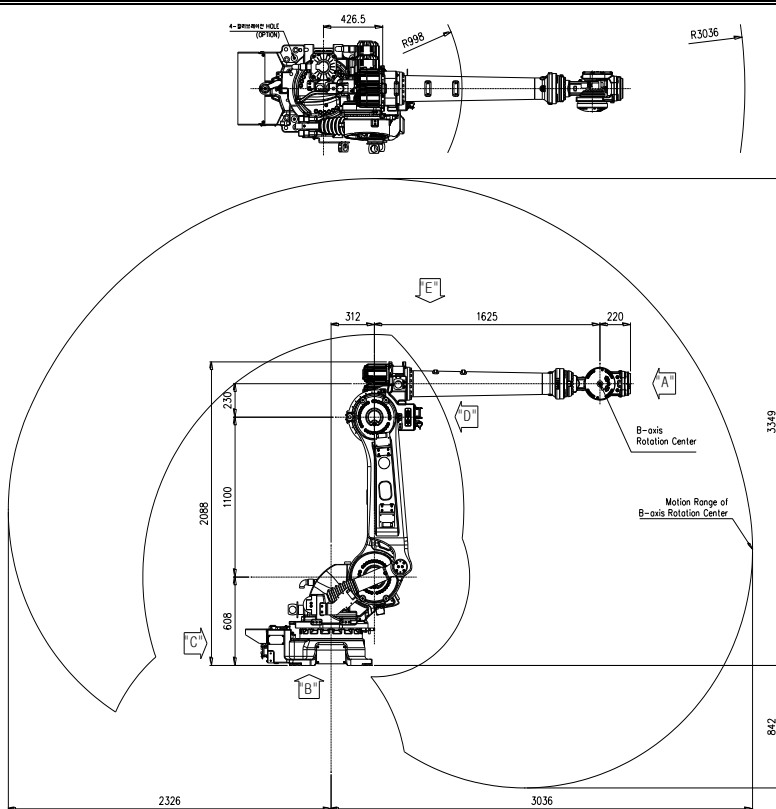


# HS160L

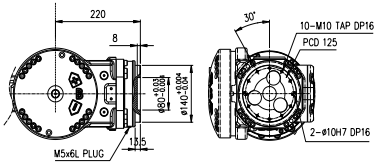
## Payload 160Kgf

Installation method		Application	
Floor	●	Spot welding	●
Ceiling		Arc welding	
Wall surface		Handling	●
		Assembly	
		Sealing	●
		Painting	

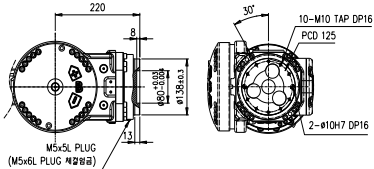


**View A: Detailed drawing of the wrist attachment part**

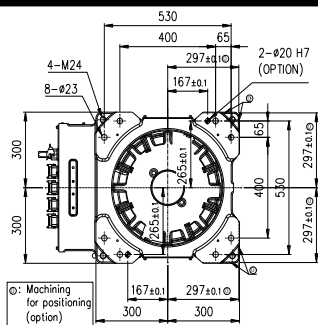
**OLD**



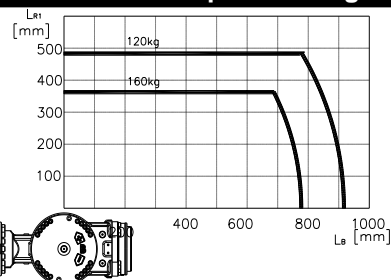
**NEW**



**View B: Dimensional drawing for the floor installation of the body**



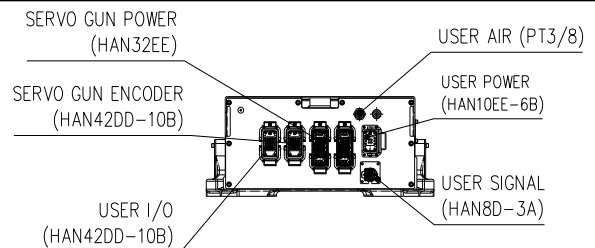
**Wrist-axis torque line diagram**



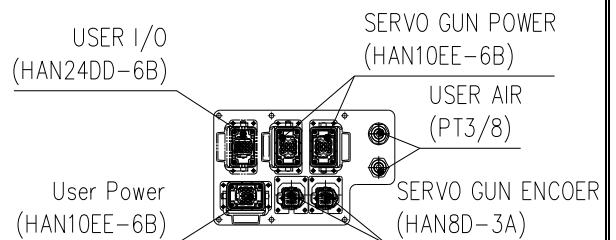
Item		Specification	
Robot model		HS160L	
Payload		160 Kg	
Structure		Articulated	
Degree of freedom		6 axes	
Max. working envelope	Arm	S Swivel	$\pm 3.142$ rad ( $\pm 180^\circ$ )
		H Horizontal	$+2.705 \sim -0.175$ rad ( $+155^\circ \sim +10^\circ$ )
		V Vertical	$+3.316 \sim -1.396$ rad ( $+190^\circ \sim -80^\circ$ )
	Wrist	R2 Rotation 2	$\pm 6.284$ rad ( $\pm 360^\circ$ )
		B Bending	$\pm 2.234$ rad ( $\pm 128^\circ$ )
Max. working speed	Arm	S Swivel	1.658 rad / s (120° / s)
		H Horizontal	1.484 rad / s (115° / s)
		V Vertical	1.484 rad / s (115° / s)
	Wrist	R2 Rotation 2	2.094 rad / s (174° / s)
		B Bending	2.094 rad / s (172° / s)
Wrist torque	R1 Rotation 1	3.316 rad / s (260° / s)	
	R2 Rotation 2	1,079 Nm (110 kgfm)	
	B Bending	1,079 Nm (110 kgfm)	
R1 Rotation 1	566 Nm (58 kgfm)		
repeatability		$\pm 0.15$ mm	
Ambient Temperature		0 ~ 45 °C (273 ~ 318 K)	
Robot's Weight		985 Kg	

*\*) When the optional limit switch is attached, the action range of the main axis will be limited (see the manual)*

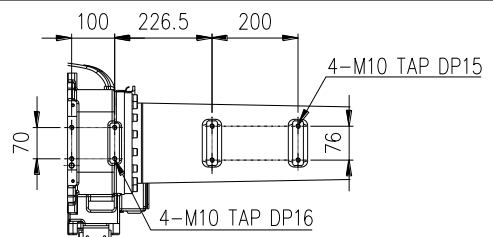
**View C: Application cable connection part**



**View D: Application cable connection part**



**View E: Details of the application ancillary part attachment**



**\*\* For product improvement, some of the ratings, specifications, dimensions, etc. are subject to changes without notice.**