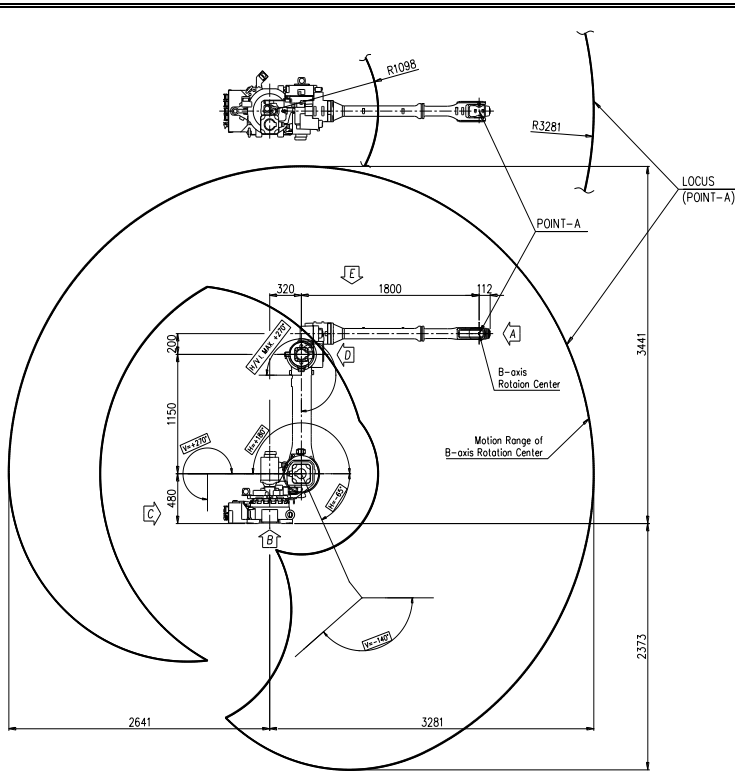


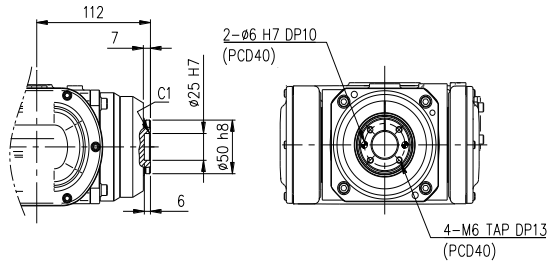
HH020L

Payload 20Kg

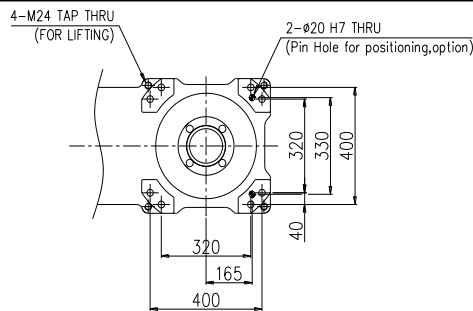
Installation method		Application	
Floor	●	Spot welding	
Ceiling	●	Arc welding	
Wall surface	●	Handling	●
		Assembly	●
		Sealing	●
		Painting	



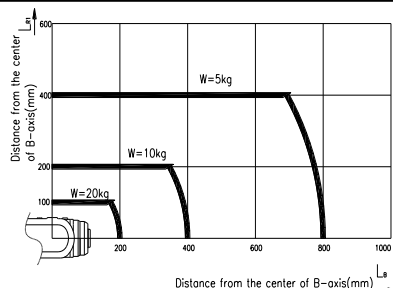
View A: Detailed drawing of the wrist attachment part



View B: Dimensional drawing for the floor installation of the body

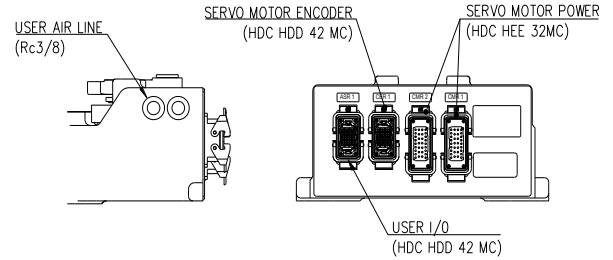


Wrist-axis torque line diagram

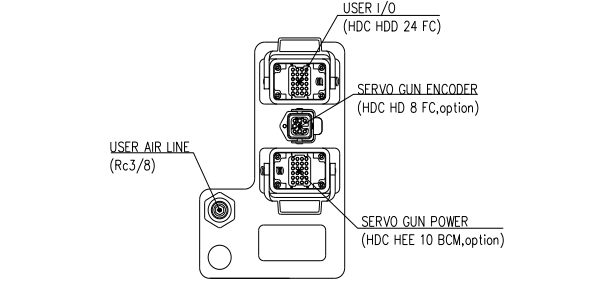


Item	Specification	
Robot model	HH020L	
Payload	20 Kg	
Structure	Articulated	
Degree of freedom	6 axes	
Max. working envelope	A Swivel	± 3.141 rad ($\pm 180^\circ$)
	H Horizontal	$+3.141 \sim -1.134$ rad ($+180^\circ \sim -65^\circ$)
	V Vertical	$+3.141 \sim -1.396$ rad ($+180^\circ \sim -80^\circ$)
	R2 Rotation 2	± 3.403 rad ($\pm 195^\circ$)
	B Bending	± 2.356 rad ($\pm 135^\circ$)
Max. working speed	R1 Rotation 1	± 6.283 rad ($\pm 360^\circ$)
	A Swivel	3.054 rad / s (175° / s)
	H Horizontal	3.054 rad / s (175° / s)
	V Vertical	3.141 rad / s (180° / s)
	R2 Rotation 2	6.283 rad / s (360° / s)
Wrist torque	B Bending	6.632 rad / s (380° / s)
	R1 Rotation 1	10.472 rad / s (600° / s)
	R2 Rotation 2	39.2 Nm (4 Kgfm)
	B Bending	39.2 Nm (4 Kgfm)
	R1 Rotation 1	19.6 Nm (2 Kgfm)
Accuracy of position repeatability	± 0.08 mm	
Ambient Temperature	$0 \sim 45^\circ\text{C}$ ($273 \sim 318$ K)	
Robot's Weight	535 Kg	

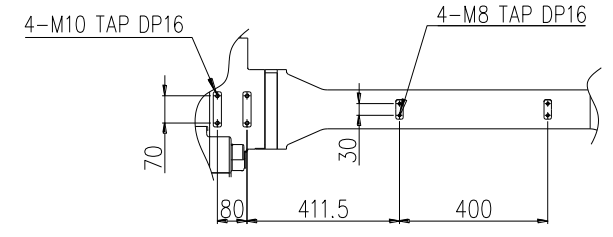
View C: Application cable connection part (Option)



View D: Application cable connection part (Option)



View E: Details of the application ancillary part attachment



** For product improvement, some of the ratings, specifications, dimensions, etc. are subject to changes without notice.